

For more information contact your local LGC Standards office:

France

LGC Standards S.a.r.l.
6, rue Alfred Kastler
BP 83076
67123 MOLSHEIM CEDEX
FRANCE
Tel: +33 (0)3 88 04 82 82
Fax: +33 (0)3 88 04 82 90
fr@lgcstandards.com

Germany

LGC Standards GmbH
Mercatorstr. 51
46485 Wesel
GERMANY
Tel: +49 (0)281 9887 230
Fax: +49 (0)281 9887 239
atcc.de@lgcstandards.com

Italy

LGC Standards S.r.l.
Via Venezia, 23
20099 Sesto San Giovanni (MI)
ITALY
Tel: +39 02 24126 830
Fax: +39 02 24126 831
it@lgcstandards.com

Poland

LGC Standards Sp. z o.o.
ul. M. Konopnickiej 1
Dzieskanow Lesny
05-092 Lomianki
POLAND
Tel: +48 (0)22 751 31 40
Fax: +48 (0)22 751 58 45
pl@lgcstandards.com

Spain

LGC Standards S.L.U.
C/ Salvador Espriu, N° 59 2º
08005 Barcelona
SPAIN
Tel: +34 93 308 41 81
Fax: +34 93 307 36 12
es@lgcstandards.com

Sweden

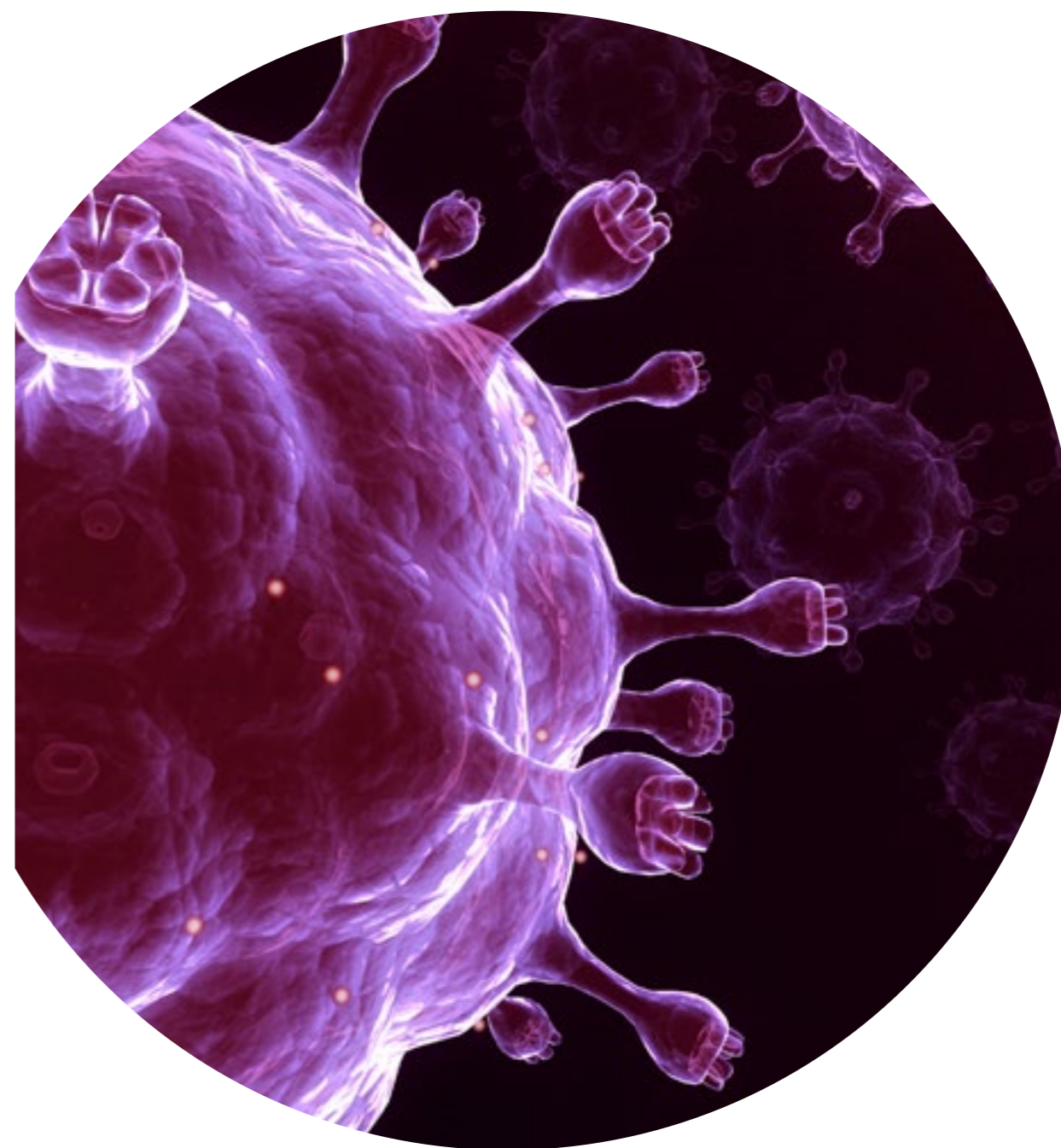
LGC Standards AB
PO Box 1737
SE-501 17 Borås
SWEDEN
Tel: +46 (0)33 20 90 60
Fax: +46 (0)33 20 90 79
atcc.se@lgcstandards.com

United Kingdom

LGC Standards
Queens Road
Teddington
Middlesex, TW11 0LY
UK
Tel: +44 (0)20 8943 8489
Fax: +44 (0)20 8943 8405
atcc@lgcstandards.com

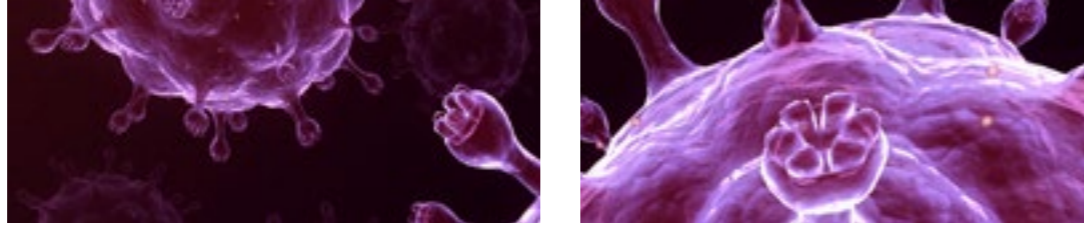


Influenza research materials



www.lgcstandards-atcc.org





INFLUENZA RESEARCH MATERIALS

Major disease outbreaks are associated with circulation of influenza virus types A and B in the human population. Infection with Influenza B virus is usually milder than infection with Influenza A virus, but both agents are major causes of upper respiratory illness.

The ATCC Virology Collection includes a number of examples of each virus type from a variety of sources. These are listed in the table below. ATCC has recently adapted several influenza strains

to tissue culture (TC) using MDCK cells (ATCC® CCL-34™). The new TC-adapted products include two swine-derived H1N1 viruses, two H3N2 subtypes and two influenza B viruses. These TC-adapted products join three popular strains already available. Three human-derived 2009 H1N1 viruses that were isolated in tissue culture at ATCC are also available. In addition, the Collection includes antisera to influenza A and several new monoclonal antibodies to highly pathogenic avian influenza hemagglutinins.

Influenza viruses

Description	Strain	ATCC® No.	Host
INFLUENZA A - HUMAN			
Influenza A virus (H1N1)	A1/Denver/1/57	VR-546™	Chicken embryo
Influenza A virus (H1N1)	A1/FM/1/47	VR-97™	Chicken embryo
Influenza A virus (H1N1)	A1/Mal/302/54	VR-98™	Chicken embryo
Influenza A virus (H1N1)	A/Fort Monmouth/1/1947	VR-1754™	Chicken embryo
Influenza A virus (H1N1)	A/New Jersey/8/76 (Hsw N1)	VR-897™	Chicken embryo
Influenza A virus (H1N1)	A/NWS/33	VR-219™	Chicken embryo
Influenza A virus (H1N1)	A/PR/8/34*	VR-95™	Chicken embryo
Influenza A virus (H1N1)	A/PR/8/34*	VR-1469™	MDCK cells (ATCC®CCL-34™)
Influenza A virus (H1N1)	A/Weiss/43	VR-96™	Chicken embryo
Influenza A virus (H1N1)	A/WS/33	VR-825™	Chicken embryo
Influenza A virus (H1N1)	A/WS/33	VR-1520™	MDCK cells (ATCC®CCL-34™)
Influenza A virus (H1N1)	A/Virginia/ATCC1/2009	VR-1736™	MDCK cells (ATCC®CCL-34™)
Influenza A virus (H1N1)	A/Virginia/ATCC2/2009	VR-1737™	MDCK cells (ATCC®CCL-34™)
Influenza A virus (H1N1)	A/Virginia/ATCC3/2009	VR-1738™	MDCK cells (ATCC®CCL-34™)
Influenza A virus (H3N2)	Alice (derived from MRC-2 [recombinant])	VR-776™	Chicken embryo
Influenza A virus (H3N2)	A2/Aichi/2/68*	VR-547™	Chicken embryo
Influenza A virus (H3N2)	A2/Aichi/2/68*	VR-1680™	MDCK cells (ATCC®CCL-34™)
Influenza A virus (H3N2)	A2/Hong Kong/8/68*	VR-544™	Chicken embryo
Influenza A virus (H3N2)	A2/Hong Kong/8/68*	VR-1679™	MDCK cells (ATCC®CCL-34™)
Influenza A virus (H3N2)	A/Port Chalmers/1/73	VR-810™	Chicken embryo
Influenza A virus (H3N2)	A/Victoria/3/75	VR-822™	Chicken embryo
Influenza A virus (H3N2)	MRC-2 (A/England/42/72 X A/PR/8/34)	VR-777™	Chicken embryo
INFLUENZA A - EQUINE			
Influenza A virus (H3N8)	A/ Equine/2/Miami/1/63	VR-317™	Chicken embryo
INFLUENZA A - SWINE			
Influenza A virus (H1N1)	A/Swine/1976/31	VR-99™	Chicken embryo
Influenza A virus (H1N1)	A/Swine/1976/31	VR-1682™	MDCK cells (ATCC®CCL-34™)
Influenza A virus (H1N1)	A/Swine/Iowa/15/30	VR-333™	Chicken embryo
Influenza A virus (H1N1)	A/Swine/Iowa/15/30	VR-1683™	MDCK cells (ATCC®CCL-34™)
INFLUENZA B - HUMAN			
Influenza B virus	B/Allen/45	VR-102™	Chicken embryo
Influenza B virus	B/Brigit	VR-786™	Chicken embryo
Influenza B virus	B/GL/1739/54	VR-103™	Chicken embryo
Influenza B virus	B/Hong Kong/5/72	VR-823™	Chicken embryo
Influenza B virus	B/Lee/40*	VR-101™	Chicken embryo

Influenza viruses (cont.)

Description	Strain	ATCC® No.	Host
Influenza B virus	B/Lee/40*	VR-1535™	MDCK cells (ATCC®CCL-34™)
Influenza B virus	B/Maryland/1/59	VR-296™	Chicken embryo
Influenza B virus	B/Mass/3/66	VR-523™	Chicken embryo
Influenza B virus	B/R5	VR-787™	Chicken embryo
Influenza B virus	B/R22 Barbara	VR-788™	Chicken embryo
Influenza B virus	B/R75	VR-789™	Chicken embryo
Influenza B virus	B/Russia/69	VR-790™	Chicken embryo
Influenza B virus	B/Taiwan/2/62	VR-295™	Chicken embryo
Influenza B virus	B/Taiwan/2/62	VR-1735™	MDCK cells (ATCC® CCL-34™)

* Recommended by FDA for analytical sensitivity (LoD) studies (Draft Guidance for Industry and FDA Staff - Establishing the Performance Characteristics of In Vitro Diagnostic Devices for the Detection and Differentiation of Influenza Viruses. Docket Number FDA-2008-D-0095).

Antisera

Description	Strain	ATCC® No.	Comments
Influenza A (H1N1) antiserum	Against A/Swine/1976/31 (ATCC® VR-99™)	VR-1289™	NIAID V-301-501-552
Influenza A (H3N8) antiserum	Against A/Equine/2/Miami/1/63 (ATCC® VR-317™)	VR-1287™	NIAID V-301-571-552
Influenza A antiserum	Against A2/Japan/170/62 (ATCC® VR-40™)	VR-1284™	NIAID V-301-541-552
Influenza A antiserum	Against A2/Taiwan/1/64 (ATCC® VR-480™)	VR-1285™	NIAID V-301-551-552

RNA from viruses

Description	Strain	ATCC® No.	Significance
Human Influenza A virus (H3N2)	A/Aichi/2/68	VR-1680D	H3N2
Swine Influenza A virus (H1N1)	A/Swine/1976/31	VR-1682D	H1N1
Swine Influenza A virus (H1N1)	A/Swine/Iowa/15/30	VR-1683D	H1N1
Human Influenza A virus (H1N1)	A/Virginia/ATCC1/2009	VR-1736D	2009 H1N1
Human Influenza A virus (H1N1)	A/Virginia/ATCC2/2009	VR-1737D	2009 H1N1
Human Influenza A virus (H1N1)	A/Virginia/ATCC3/2009	VR-1738D	2009 H1N1

Monoclonal antibodies

Description	Antigen	ATCC® No.	Comments
Monoclonal antibody 1F7 to Influenza A virus hemagglutinin H5 (HPAI)	Against H5 hemagglutinin from strain A/Hong Kong/483/1997 (H5N1)	VR-1608™	H5-specific
Monoclonal antibody 6D5 to Influenza A virus hemagglutinin H5 (HPAI)	Against H5 hemagglutinin from strain A/Hong Kong/483/1997 (H5N1)	VR-1609™	H5-specific
Monoclonal antibody 3D3 to Influenza A virus hemagglutinin H7	Against the HA1 domain of the H7 hemagglutinin from strain A/Chicken/Netherlands/1/03 (H7N7)	VR-1641™	H7-specific
Monoclonal antibody 1D8 to Influenza A virus hemagglutinin H9	Against the HA1 domain of the H9 hemagglutinin from strain A/Guinea Fowl/Hong Kong/WF10/99 (H9N2)	VR-1642™	H9-specific
Monoclonal antibody 5D3 to Influenza A virus hemagglutinin H1	Against H1 hemagglutinin from strain A/South Carolina/1/1918 (H1N1)	VR-1668™	IgG2ak
Monoclonal antibody 58C4 to Influenza A virus hemagglutinin H1	Against H1 hemagglutinin from strain A/South Carolina/1/1918 (H1N1)	VR-1672™	IgG2bk
Monoclonal antibody EB11 to Influenza A virus hemagglutinin H1	Against H1 hemagglutinin from strain A/Brisbane/59/2007 (H1N1)	VR-1741™	IgG1k
Monoclonal antibody AE7 to Influenza A virus hemagglutinin H1	Against H1 hemagglutinin from strain A/Brisbane/59/2007 (H1N1)	VR-1742™	IgG1k
Monoclonal antibody FB8 to Influenza A virus hemagglutinin H1	Against H1 hemagglutinin from strain A/Brisbane/59/2007 (H1N1)	VR-1743™	IgG1k and IgG2bk

Host cell line

Description	Strain	ATCC® No.	Comments
Kidney; Dog (<i>Canis familiaris</i>)	MDCK (NBL-2)	CCL-34™	Recommended host for ATCC® VR-1469™, VR-1520™, VR-1535™, VR-1679™, VR-1680™, VR-1682™, VR-1683™, VR-1735™, VR-1736™, VR-1737™, VR-1738™

www.lgcstandards-atcc.org



© 2013 American Type Culture Collection. The ATCC trademark and trade name, any and all ATCC catalog numbers and any other trademarks listed in this publication are trademarks of the American Type Culture Collection unless indicated otherwise.

These products are for laboratory use only. Not for human or diagnostic use. ATCC products may not be resold, modified for resale, used to provide commercial services or to manufacture commercial products without prior ATCC written approval.

No part of this publication may be reproduced or transmitted in any form or by any means, electronic or mechanical, including photocopying, recording or any retrieval system, without the written permission of the copyright holder. © LGC Limited, 2013. All rights reserved.